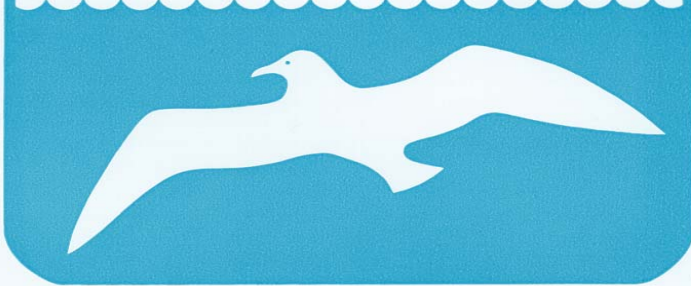


CHESAPEAKE BAY BRIDGE-TUNNEL



THE 17-MILE LINK BETWEEN VIRGINIA BEACH/
NORFOLK AND VIRGINIA'S EASTERN SHORE

TOLL SCHEDULE

TOLL INCLUDES ALL PASSENGERS

EFFECTIVE AUGUST 9, 2006

CLASS	PASSENGER CARS LIGHT TRUCKS AND RV'S	TOLL
1	Two-axle, four-tire vehicle including passenger car, pick-up truck, panel truck, station wagon, motorcycle, and minibus/van with 15 or less seating capacity. Return trip within 24 hours (Receipt Required).	\$12.00 \$ 5.00
2	Class 1 vehicle towing one-axle trailer.	\$16.00
3	Class 1 vehicle towing two-axle trailer or other two-axle vehicle.	\$20.00
4	Class 1 vehicle towing three-axle trailer.	\$24.00
BUSES		
8	School Buses as defined by the Code of Virginia to also include school buses of any color.	\$10.00
14	Two-axle bus.	\$30.00
15	Three-axle bus.	\$30.00

LUCIUS J. KELLAM, JR. BRIDGE-TUNNEL

operated by

Chesapeake Bay Bridge and Tunnel District

P. O. Box 111

Cape Charles, VA 23310

www.cbbt.com



**COMPRESSED
GAS
REGULATIONS
For Non-Commercial Vehicles**

Maximum capacity: (a) Not more than two non-permanently mounted containers having a maximum individual capacity of 105 pounds water capacity or 45 pounds LP-Gas each, or one container having maximum capacity of 60 pounds LP-Gas, or (b) not more than two permanently mounted containers having a maximum total capacity of 200 gallons water capacity LP-Gas when used as a motor fuel. Tanks must meet the approved standards of the Department of Transportation and are subject to inspection at toll plaza. They must be properly secured and valves closed while crossing the facility.

**TOLL SCHEDULE
TOLL INCLUDES ALL PASSENGERS**

EFFECTIVE AUGUST 9, 2006

CLASS	HEAVY TRUCKS AND RV'S	TOLL
9	Two-axle, six-tire vehicle (except buses).	\$17.00
10	Three-axle vehicle, (except buses); Class 9 vehicle towing one-axle trailer.	\$21.00
11	Four-axle vehicle; Class 9 vehicle towing two-axle trailer or other two-axle vehicle; Class 10 vehicle towing one-axle trailer.	\$28.00
12	Five-axle vehicle; Class 9 vehicle towing three-axle trailer; Class 10 vehicle towing two-axle trailer; Class 11 vehicle towing one-axle trailer.	\$35.00
13	Six-axle vehicle; Class 10 vehicle towing three-axle trailer; Class 11 vehicle towing two-axle trailer; Class 12 vehicle towing one-axle trailer.	\$42.00
16	Special over-dimension vehicle*, i.e., vehicles unable to maintain 45 mph, exceeding 80,000 lbs., 100 feet in length, or 8'6" width. (Maximum width permitted, 14'.) *Escort fee and prior approval required except overwidth vehicles under 10'6".	\$60.00 \$140.00

OVERHEAD CLEARANCE 13 FEET 6 INCHES

SEE REVERSE SIDE FOR PASSENGER VEHICLE SCHEDULE

Tolls subject to change without notice